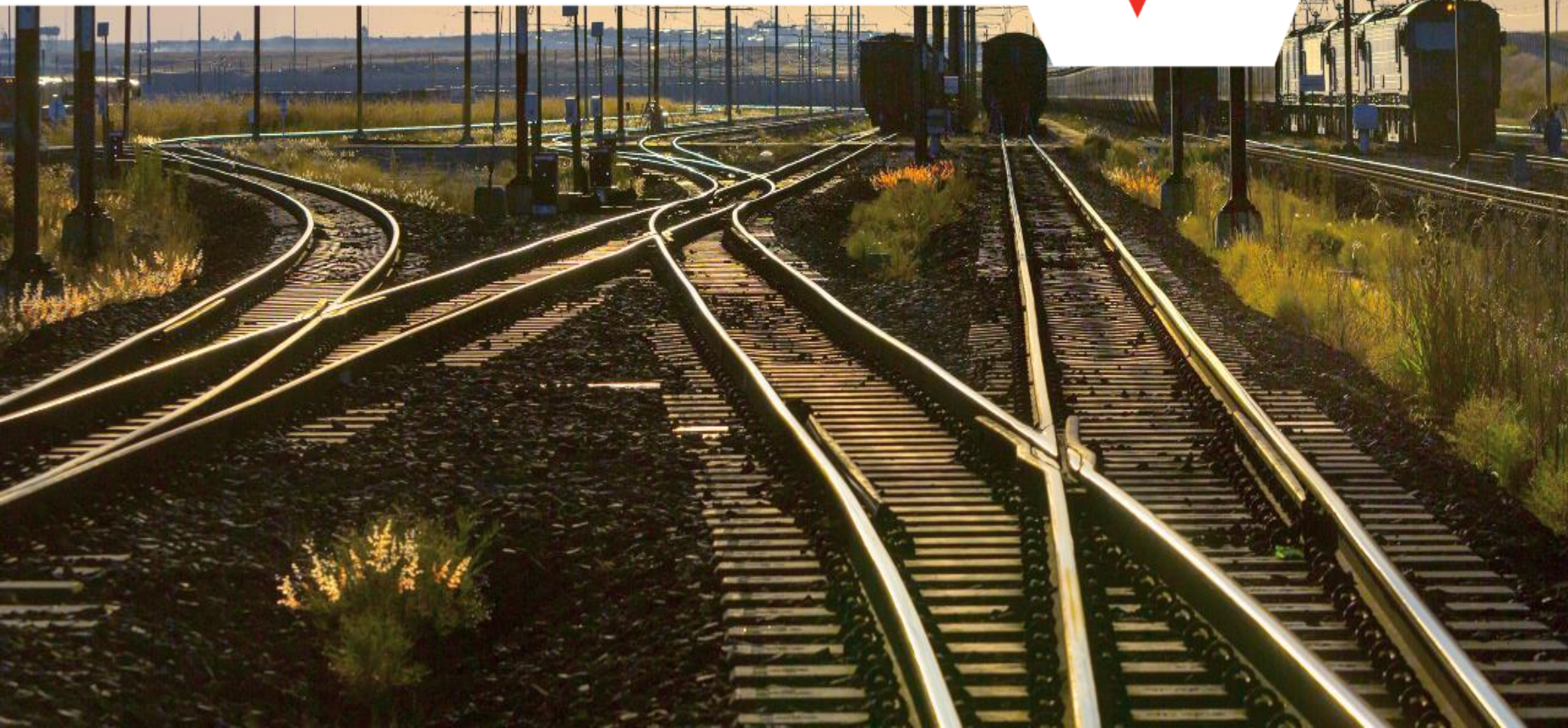


# SpotLight Mobile App User Guide

October 2017

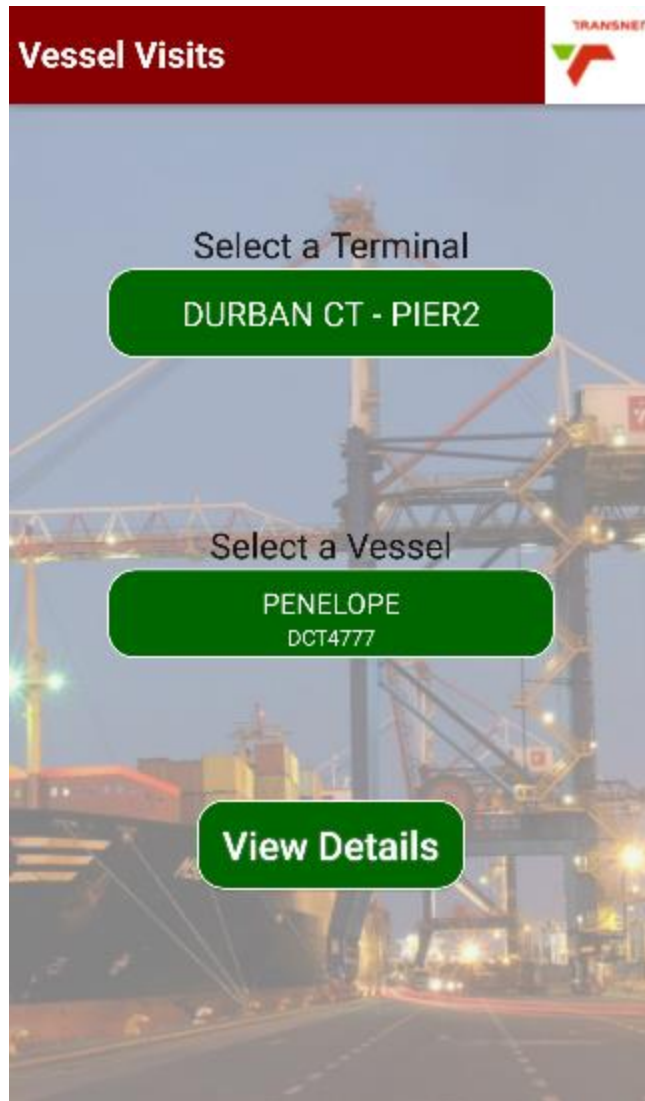




The Landing screen is presented when the Mobile App is launched. All functionality can be accessed from this screen. The primary functionality include:

- **Vessel Visits:** Display vessel information calling at terminals operating Navis and GCOS systems
- **Truck Visits:** Display Truck information for Navis terminal visits only
- **Track & Trace:** Displays container information from Navis
- **Contact Us:** Displays Transnet contact information
- **Announcements:** Displays announcements pushed from the Transnet Call Centre
- **Weather:** Displays terminal specific weather information
- **Register Me:** Use this functionality to register your device

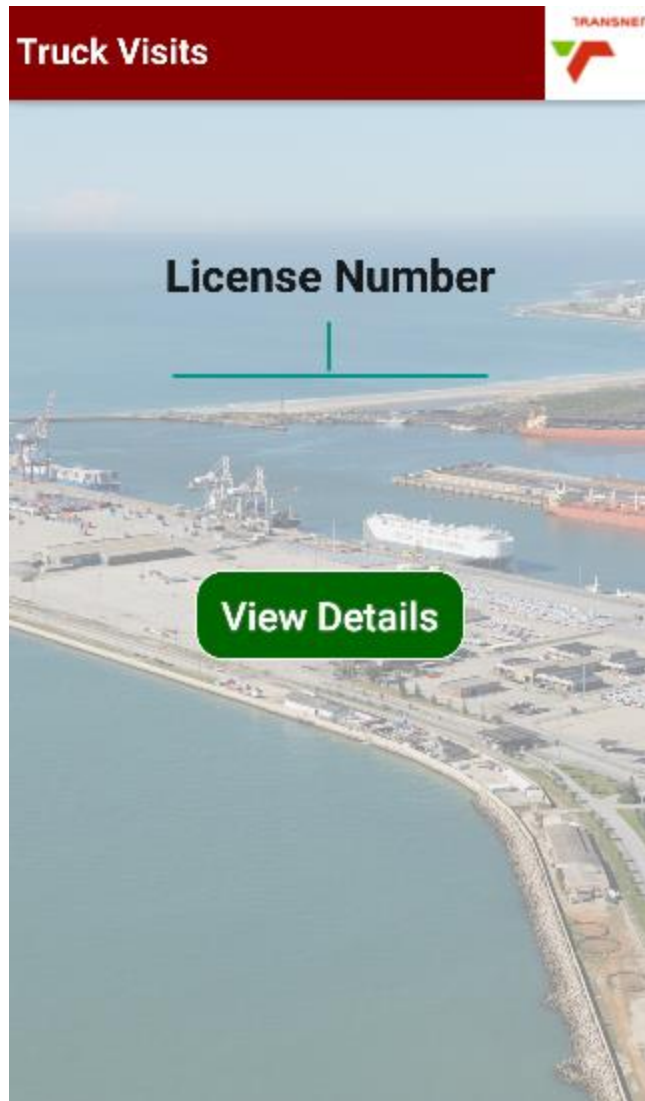




The **Vessel Visits** screen can be used to display vessel information calling at terminals operating Navis and GCOS systems.

- Step 1: Pick a Transnet terminal from the “Select a terminal” drop down list. This will pre-populate the list of vessels calling at that terminal in the “Select a Vessel” list.
- Step 2: Pick a vessel from the pre-populated “Select a Vessel” list.
- Step 3: Click the “View Details” button

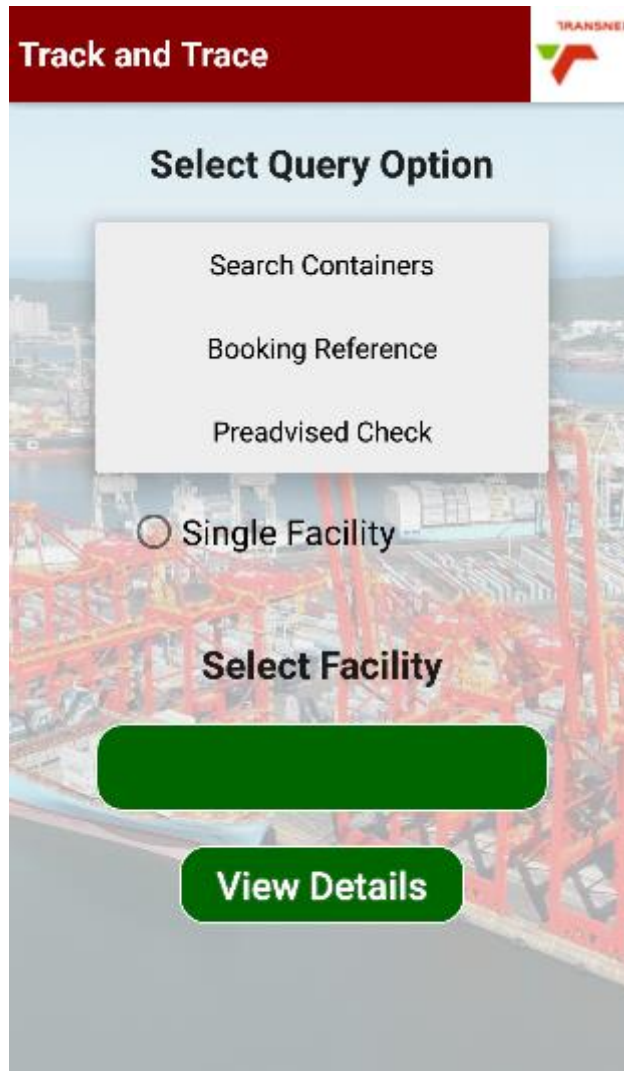
The vessel details will be displayed for the chosen vessel.



The **Truck Visits** screen can be used to display transporter information for trucks calling at terminals operating the Navis system.

- Step 1: Enter a valid truck registration number in the “License Number” field.
- Step 2: Click the “View Details” button

The transporter details will be displayed for the entered truck registration.

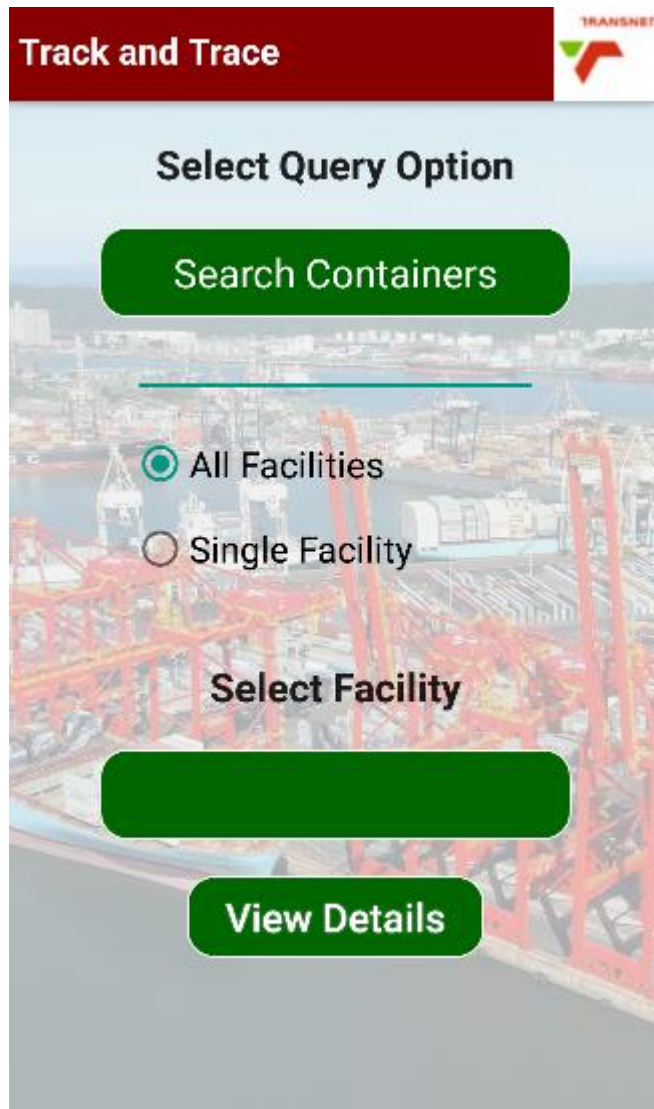


The **Track and Trace** screen can be used to display container information for terminals operating the Navis system. There are currently 3 query options for querying container information.

In order to return general information for a specific container, use the “Search Containers” query option.

In order to query containers for a specific Booking Reference, use the “Booking Reference” query option.

In order to check the pre-advise status of a specific container, use the “Preadvised Check” query option.

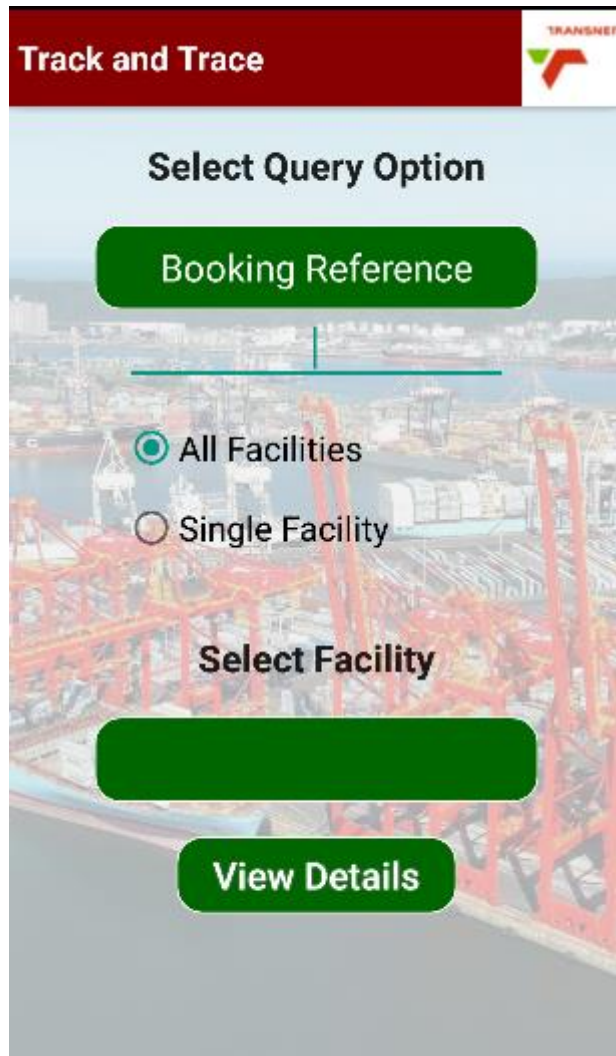


The **Track and Trace** screen can be used to display container information for terminals operating the Navis system. There are currently 3 query options for querying container information.

For the “Search Containers” query option:

- Step 1: Select the “Search Containers” query option.
- Step 2: Enter the Container Number to be queried.
- Step 3: Select whether the query is for all facilities or a Single Facility.
- Step 4: If the Single Facility is chosen, then select the required facility from the “Select Facility” drop down list.
- Step 5: Click the View Details button.

The container details will be displayed for the queried option.



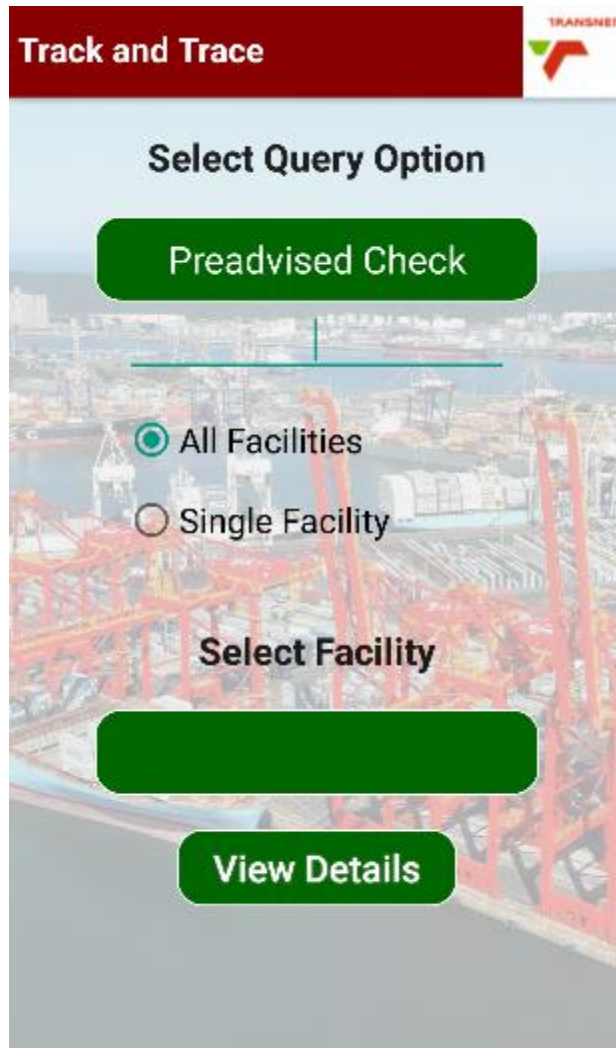
The **Track and Trace** screen can be used to display container information for terminals operating the Navis system. There are currently 3 query options for querying container information.

For the “Booking Reference” query option:

- Step 1: Select the “Booking Reference” query option.
- Step 2: Enter the Booking Reference to be queried. This option is only valid for All Facilities
- Step 3: Click the View Details button.

The container details will be displayed for the queried option.





The **Track and Trace** screen can be used to display container information for terminals operating the Navis system. There are currently 3 query options for querying container information.

For the “Preadvised Check” query option:

- Step 1: Select the “Preadvised Check” query option.
- Step 2: Enter the Container Number to be queried. This option is only valid for All Facilities
- Step 3: Click the View Details button.

The container details will be displayed for the queried option.





The **Announcements** screen displays vital Transnet terminal announcements pushed from the Transnet Call Centre.

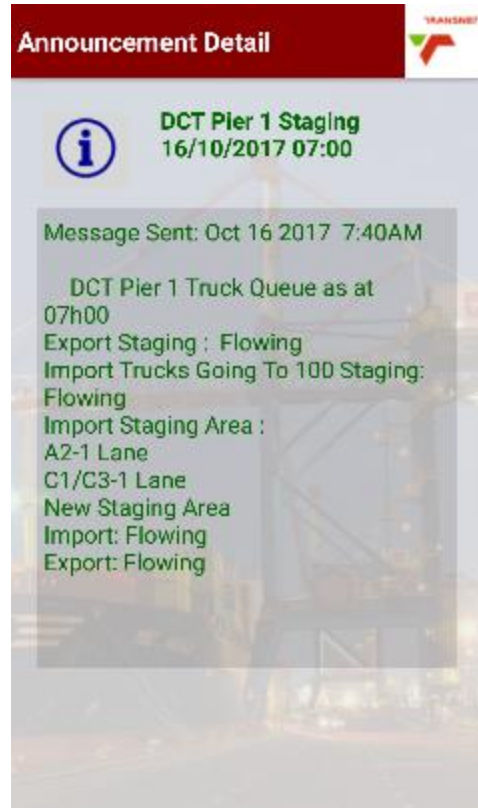
In order to view any announcements, click on the Announcements icon which can be found on the App landing page. This will display the Title for the announcement – [Diagram 1](#).

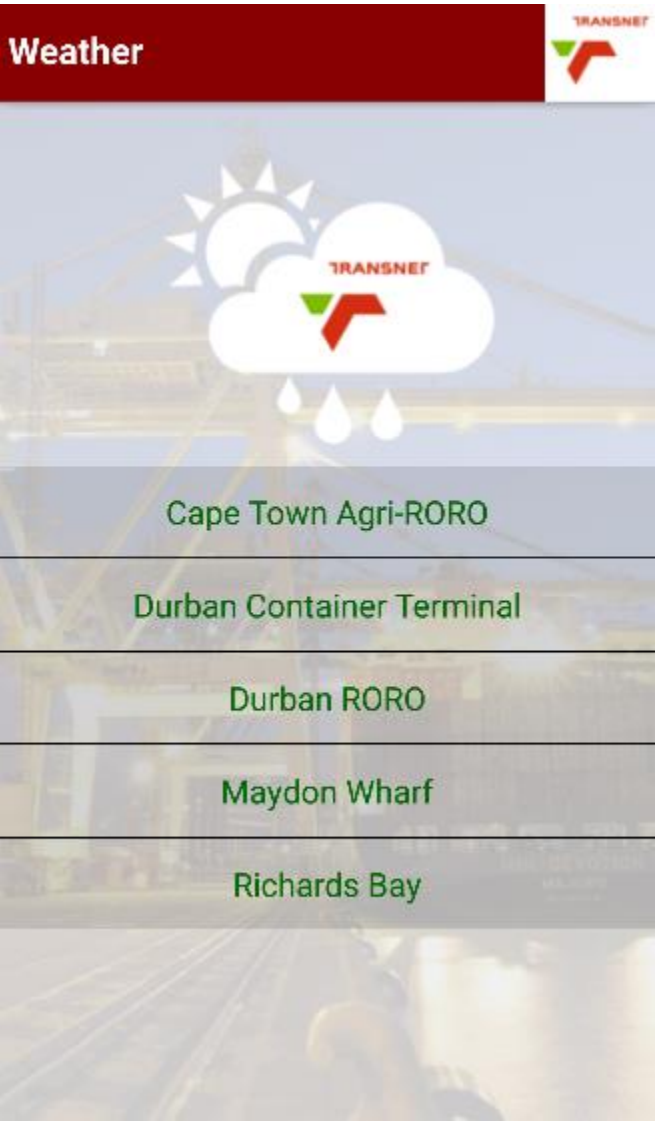
Click on a specific Announcement title to view the details – [Diagram 2](#).

Diagram 1



Diagram 2





The **Weather** screen displays weather conditions at the specified Transnet terminal.

**Note:** This weather information does not pertain to the city’s weather information but rather weather conditions experienced at the specified terminal.



The screenshot shows the 'Register Me' screen. At the top, there is a dark red header with the text 'Register Me' and the TRANSNET logo. Below the header is a large green icon of a person holding a smartphone. Underneath the icon, the text reads 'The Activation Code will be emailed to you'. Below this is a form with five input fields: 'Name', 'Surname', 'Email Address', 'Cell Number', and 'Activation Code'. At the bottom of the form is a large green button with the text 'Register Me'.

The **Register Me** screen allows users of SpotLight to register their devices for a greater user experience in the near future.

Step 1: Enter the details in the specified fields. The Activation Code must be left blank initially as this will be emailed once Step 2 below is completed.

Step 2. Click **Register Me**. This will generate the Activation Code and email it to the specified Email Address.

Step 3. Enter the received Activation Code via email in the **Activation Code** field.

Step 4. Click Register Me again.

The registration confirmation notice will be displayed on the screen as well as emailed to the user of the App.



Thank You

